



# GMT MONTHLY MEMBERSHIP PROGRESS REPORT

Results as of: 3/31/2018

Multiple District 411

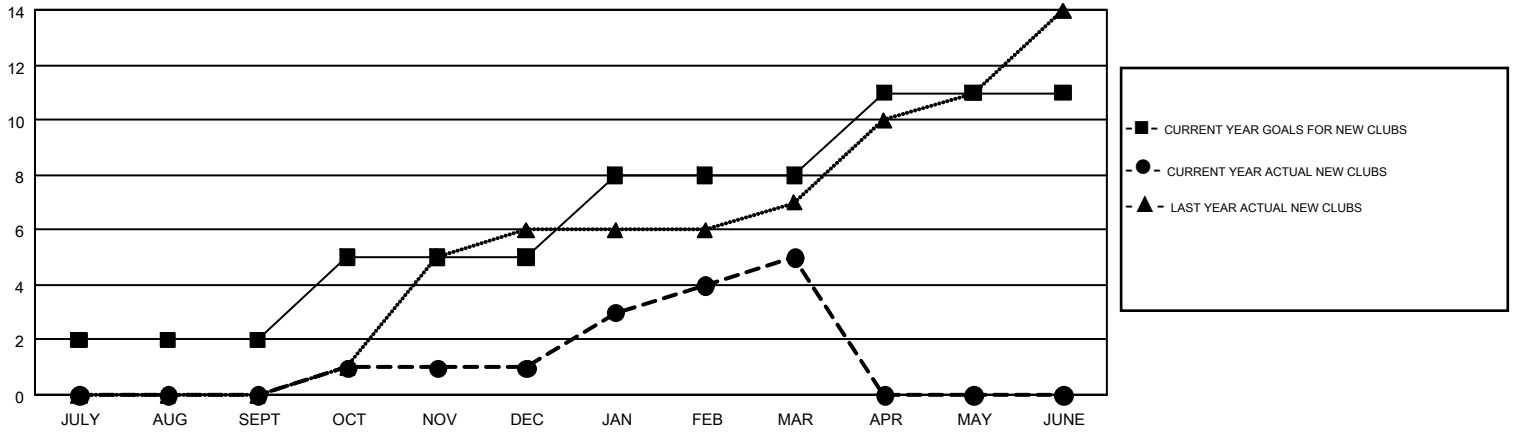
LOCATION: KENYA AFRICA

GMT: KAMAL JOSHI

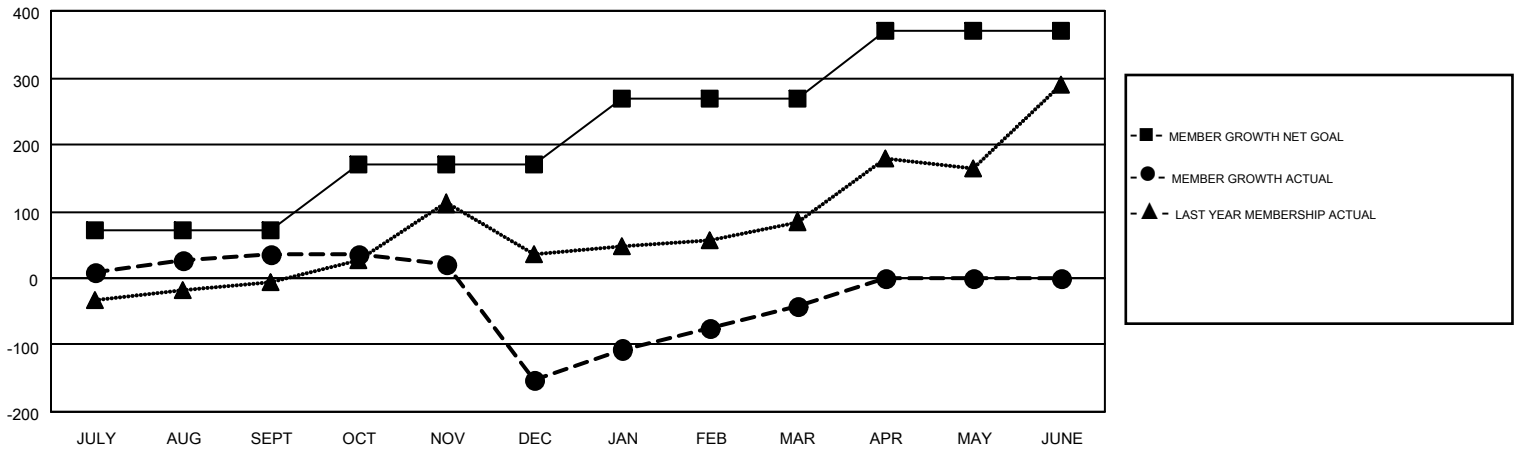
GMT CA 6-Afr

Clubs				Members			
RESULTS FOR 2017-2018				RESULTS FOR 2017-2018			
QUARTER	NEW CLUB GOAL	NEW CLUBS	DROPPED CLUBS	QUARTER	MEMBER GROWTH NET GOAL	MEMBER GROWTH ACTUAL	DROPPED MEMBERS ACTUAL (including transfers)
JULY/AUG/SEPT	2	0	0	JULY/AUG/SEPT	72	112	74
OCT/NOV/DEC	3	1	6	OCT/NOV/DEC	97	91	258
JAN/FEB/MAR	3	4	0	JAN/FEB/MAR	99	193	65
APR/MAY/JUNE	3	0	0	APR/MAY/JUNE	102	0	0

GOALS AND ACTUAL NEW CLUBS CUMULATIVE



GOALS AND ACTUAL MEMBERS CUMULATIVE



DROPPED CLUBS: 6	64 CLUBS OF 130 ADDED 1 OR MORE NEW MEMBERS	<b>GENDER DISTRIBUTION</b> MALE 2,091 (63.77%) FEMALE 1,188 (36.23%)
<b>DROPPED MEMBERS</b> DECEASED 12 CLUB CANCELLED 104 OTHER 281 <b>TOTAL 397</b>	<a href="#">CLICK HERE FOR CUMULATIVE MEMBERSHIP DATA</a>	TOTAL FAMILY UNIT MEMBERS 824  FAMILY MEMBERS PAYING HALF DUES 469